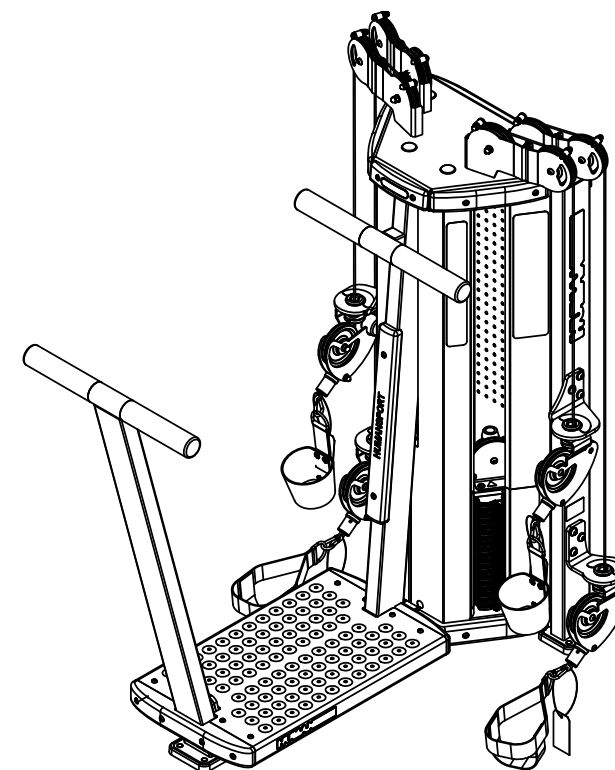
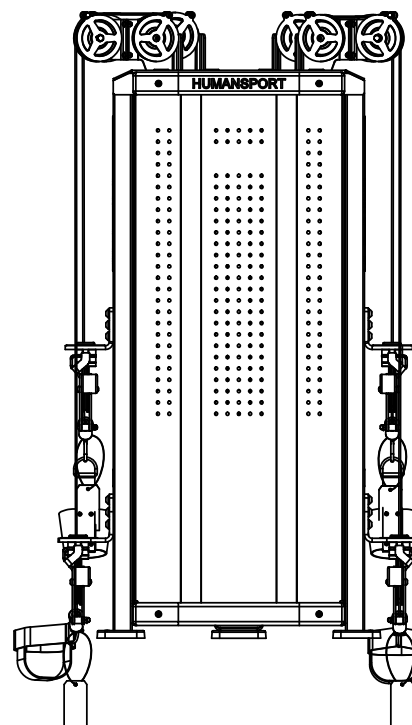
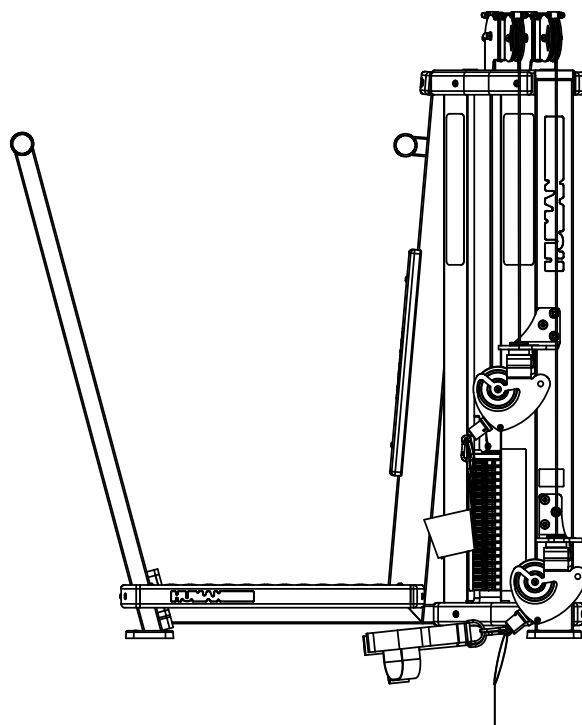
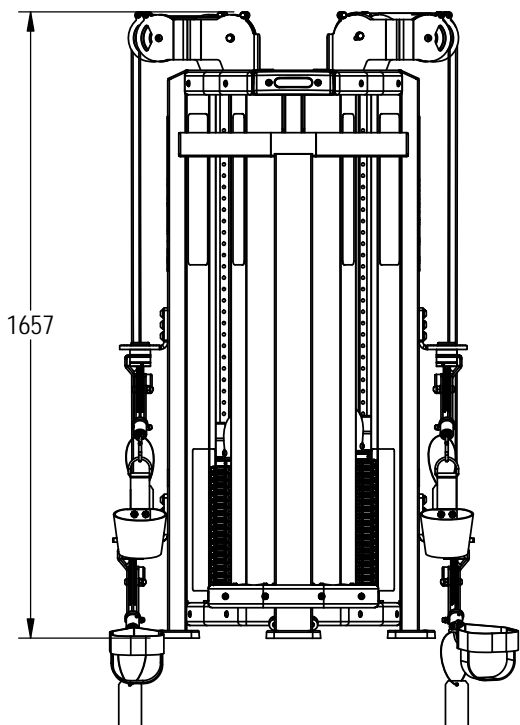
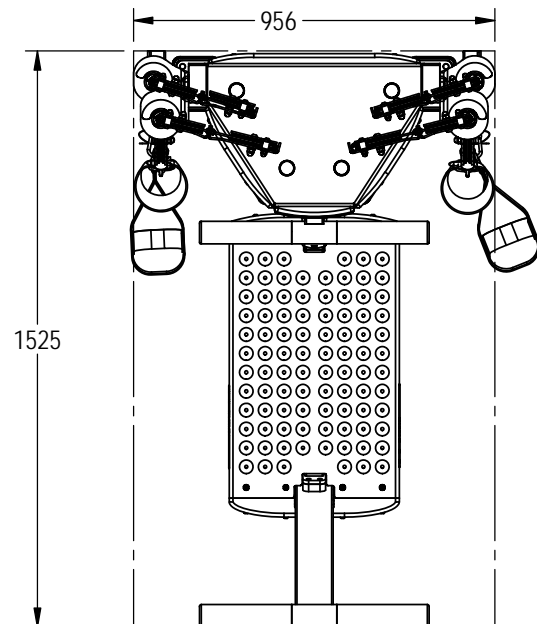


NOTES:



REVISION HISTORY

REV	DATE	DESCRIPTION	ECO	BY
A	-	DOCUMENT RELEASE	---	---
B	8/27/2013	REDRAW BOM, CHANGE TO LOCK N LOAD WWEIGHT STACK, CHANGE SHROUDS, CHANGE STICKERS	14331	CRB
C	6/10/2014	HANGTAGS ADDED TO CABLE ENDS	14689	JO

DOCUMENT STATUS:

**NOTICE OF PROPRIETARY INFORMATION**  
 THIS DOCUMENT SHALL NOT BE REPRODUCED NOR SHALL THE INFORMATION CONTAINED HEREIN BE USED BY OR DISCLOSED TO OTHER EXCEPT AS EXPRESSLY AUTHORIZED BY CORE HEALTH & FITNESS, LLC.

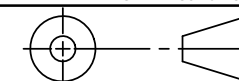
MATERIAL  
SEE BOM

FINISH  
SEE BOM

VENDOR:

P/N:

THIRD ANGLE PROJECTION



	INITIAL	DATE
DRAWN	CRB	8/27/2013
CHECKED		
APPROVED		

CORE HEALTH & FITNESS, LLC

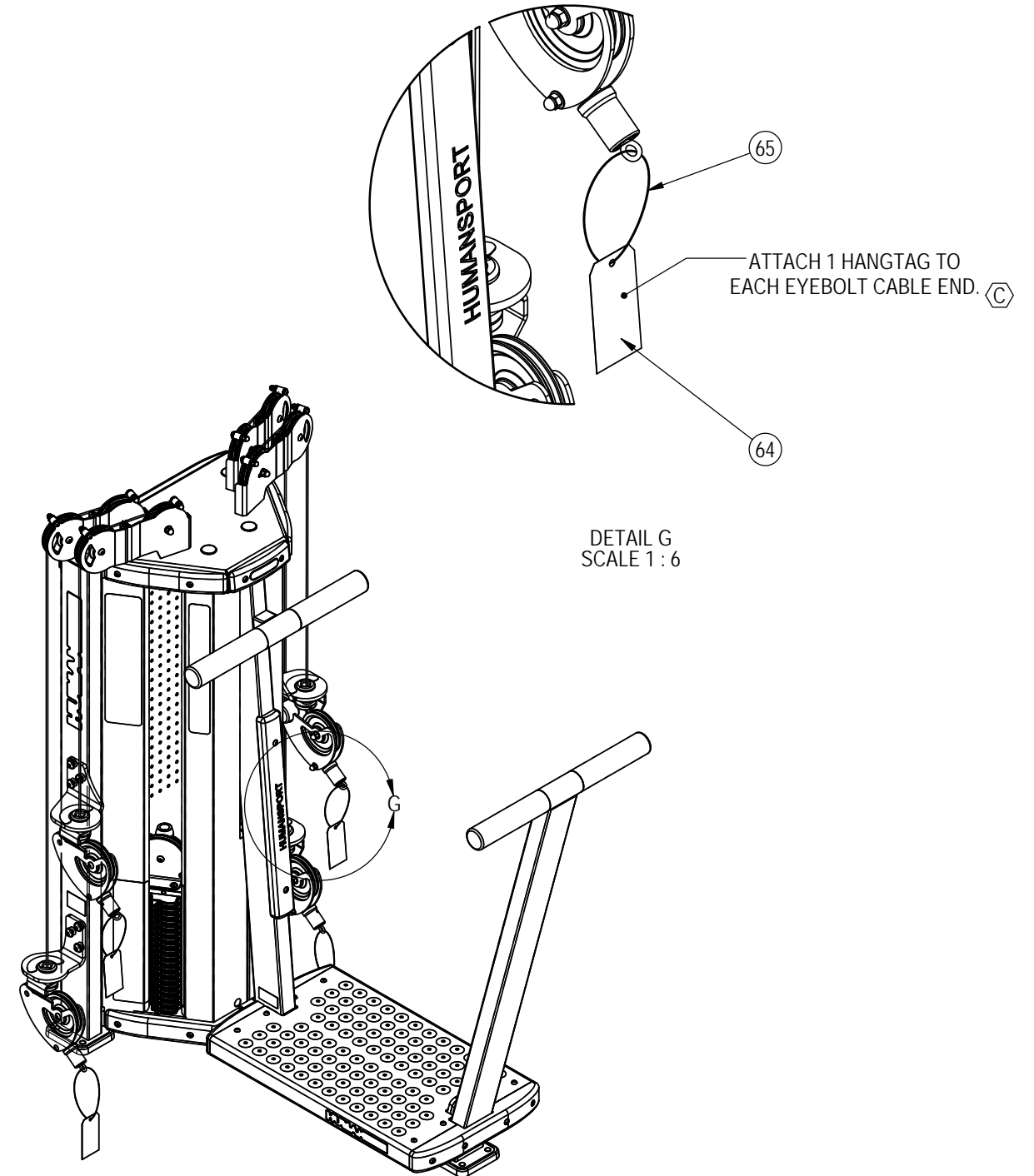
4400 NE 77th Ave., Suite 300  
 Vancouver, WA 98662

CORE PART NO  
**9HL-M9201-XXXXX** REV **C**

TITLE  
 HS, MFT, TOTAL LEGS W/LNL

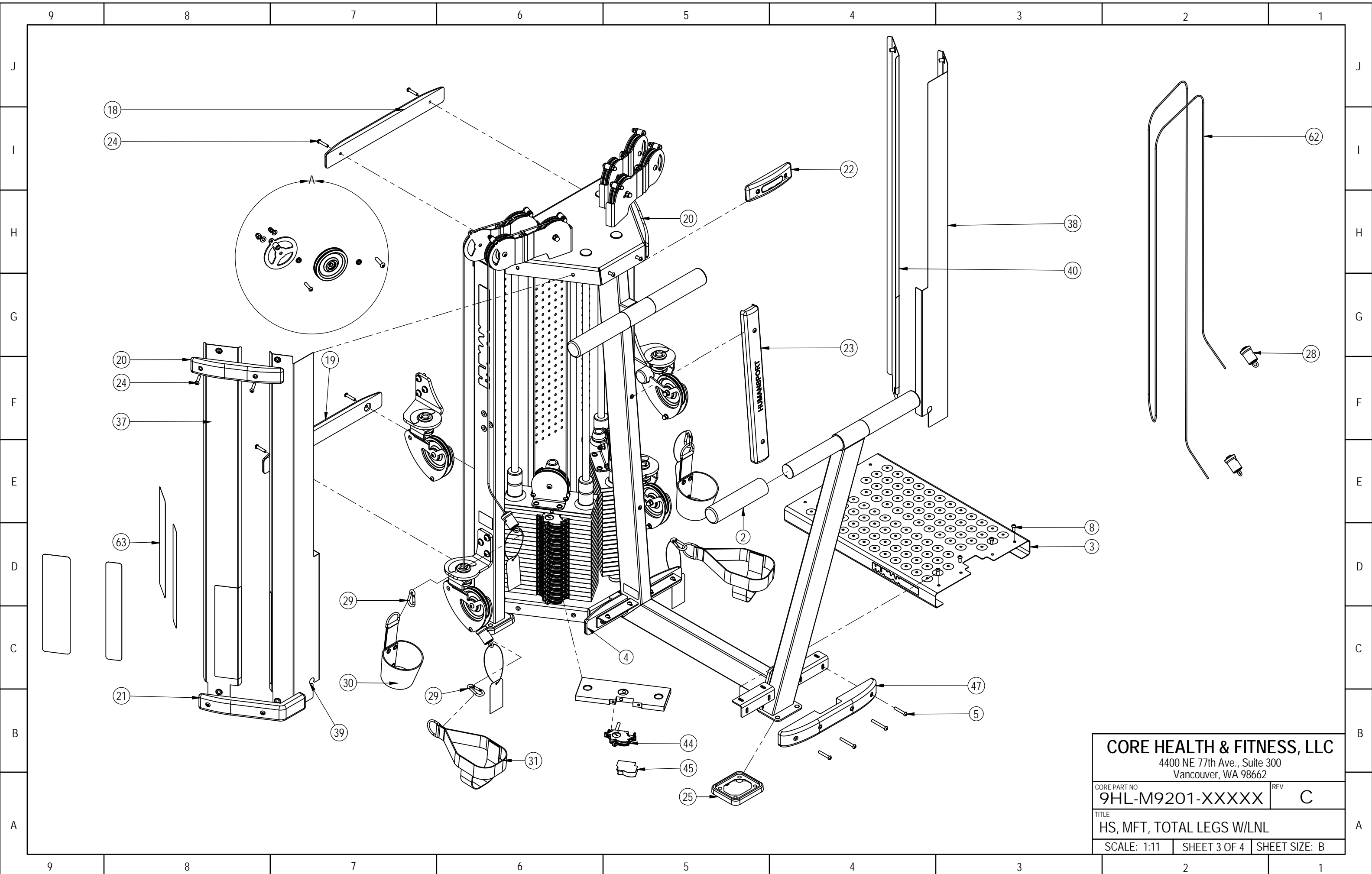
SCALE: 1:20 SHEET 1 OF 4 SHEET SIZE: B

9	8	7	6	5	4	3	2	1
ITEM NO.	PART NUMBER	DESCRIPTION		QTY.				
J	2	020-6994	GRIP, SUPPORT, PLASTIC, HS	4				
	3	020-6992	PLATFORM, SHEET METAL, SHORT,HS	1				
	4	020-7142-X	TRIM, PLATFORM,BACK, T-LEGS, HS	2				
	5	730-3044	BOLT, TRIM, PLATFORM, LEGS, HS	6				
I	6	730-3043	WASHER, PULLEY BRACKET, HUMAN SPORT	33				
	8	730-3045	BOLT, PLATFORM, TOTAL LEGS, HS	14				
	18	020-6986-X	TRIM, WOOD, TOP, BACK, HS	1				
	19	020-6987-X	TRIM, WOOD, BOTTOM, BACK, HS	1				
	20	020-6983-X	TRIM, WOOD, UPPER, HS	2				
	21	020-6982-X	TRIM, WOOD, BOTTOM, HS	2				
H	22	020-6985-X	TRIM, WOOD, TOP, CENTER, HS	1				
	23	020-6984-X	TRIM, WOOD, CENTER, HS	1				
	24	730-3030	BOLT, GENERAL, HUMAN SPORT	23				
	25	020-6988	PAD, RUBBER, FEET, HS	3				
G	28	730-0129	BEARING, ROTATING, CLAMP	4				
	29	730-0143	CLIP, METAL, HS	4				
	30	730-0139	HARNDESS, TOE, HS	2				
	31	730-0140	HARNESS, HEEL, HS	2				
	32	050-2007	LABEL, HUMAN SPORT,41.1 X 5.0	2				
F	33	050-2010	LABEL, HUMAN SPORT, 22CM X 2.67CM	2				
	35	050-2008	LABEL, CAUTION, MOVING PARTS, HS	2				
	37	730-3025	SHROUD, RIGHT, OUTSIDE	1				
	38	730-3037	SHROUD, INSIDE, RIGHT, HS	1				
	39	730-3036	SHROUD, INSIDE, LEFT, HS	1				
E	40	730-3022	SHROUD, OUTSIDE, LEFT, HUMAN SPORT	1				
	42	731-0101	PLATE,WEIGHT,5Kg,18mm	38				
	44	731-1423-KT	KIT,ASSY,SWITCH,LNL,STRAIGHT	38				
	45	050-2212	STICKER, LOCKLOAD, WEIGHT INCREMENT, HUMAN SPORT	2				
D	47	020-6990-X	TRIM, WOOD, PLATFORM, TOTAL LEGS	1				
	48	730-0142	PULLEY, ASSY, HS	12				
	50	730-3044	BOLT, TRIM, PLATFORM, LEGS, HS	2				
	54	730-3020	PULLEY BOLT, HUMAN SPORT	7				
	55	730-3034	ACORN NUT, GENERAL, HUMAN SPORT	7				
C	56	730-3033	ACORN NUT, PULLEY BOLT, HUMAN SPORT	7				
	57	120-3301	WASHER, M10	7				
	58	730-3035	SPACER, PULLEY BEARING, HUMAN SPORT	14				
	59	730-3031	OUTER BRACKET, PULLEY, HUMAN SPORT	7				
	60	730-3032	SPACER, PULLEY BRACKET, HUMAN SPORT	7				
B	62	130-1751	CABLE, 6.5 METERS, HS	1				
	63	050-2228	PLACARD, HAM/QUAD, HS	1				
	64	731-6315	TAG, ASSEM. DIMS, M9201	4				
	65	731-5960	TWIST TIE	4				
A								



**CORE HEALTH & FITNESS, LLC**  
4400 NE 77th Ave., Suite 300  
Vancouver, WA 98662

CORE PART NO	9HL-M9201-XXXXX	REV	C
TITLE	HS, MFT, TOTAL LEGS W/LNL		
SCALE: 1:20	SHEET 2 OF 4	SHEET SIZE: B	

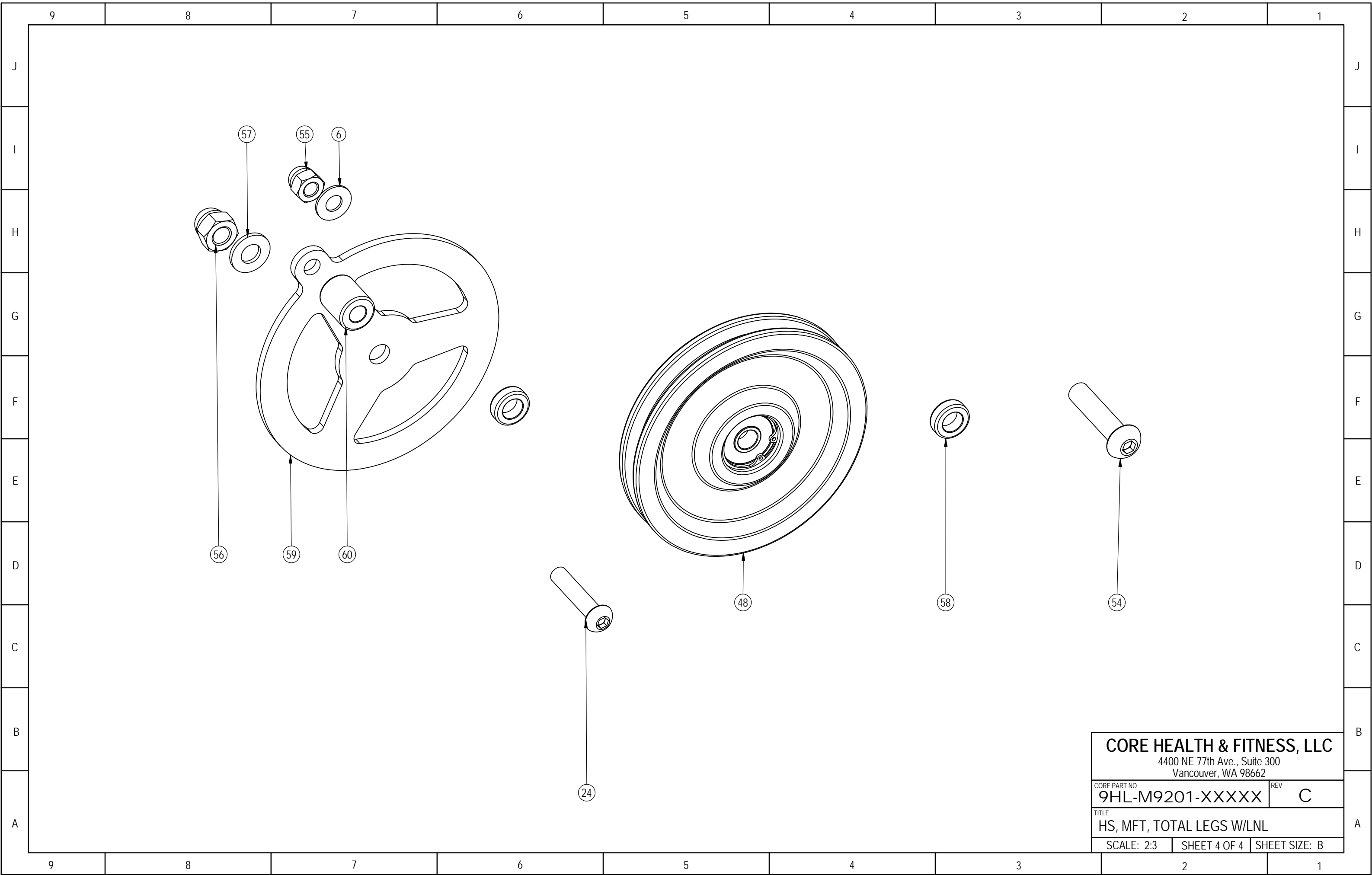


**CORE HEALTH & FITNESS, LLC**  
 4400 NE 77th Ave., Suite 300  
 Vancouver, WA 98662

CORE PART NO	REV
<b>9HL-M9201-XXXXX</b>	<b>C</b>

TITLE  
**HS, MFT, TOTAL LEGS W/LNL**

SCALE: 1:11	SHEET 3 OF 4	SHEET SIZE: B
-------------	--------------	---------------



**CORE HEALTH & FITNESS, LLC**  
 4400 NE 77th Ave., Suite 300  
 Vancouver, WA 98662

CORE PART NO	REV
<b>9HL-M9201-XXXXX</b>	<b>C</b>

TITLE  
**HS, MFT, TOTAL LEGS W/LNL**

SCALE: 2:3	SHEET 4 OF 4	SHEET SIZE: B
------------	--------------	---------------